

Blue Agricultural Co  
شركة أزرق الزراعية

## Corporate Profile

To revolutionize Syrian agriculture through innovative, sustainable farming practices and technology, improving food security and supporting local economies.

Visit Now >

[www.blue-agri.com](http://www.blue-agri.com)

# CONTENTS



01  
ABOUT  
US

---

02  
MISSION &  
VISION

---

03  
CORE  
VALUES

---

04  
OUR  
TEAM

---

05  
OUR  
PARTNERS

---

06  
OUR  
SERVICES

---

07  
GROWTH &  
FUTURE PLANS

---

08  
GET IN  
TOUCH

---

# WHO IS BLUE AGRI CO?

---

Blue Agricultural Company (BAC) is a dynamic company specializing in offering high-quality vegetable seeds, pesticides, fertilizers, and bio-stimulants to agricultural retailers and businesses. We source our products from reputable international suppliers to ensure that our clients receive the best solutions available. Driven by a passion for sustainable agriculture, we empower our clients with the latest techniques and strategies to optimize farmer success. Our team's expertise extends beyond products, offering on-site consultations and personalized strategies to support farmers directly.

*"In every walk with nature, one receives far more than he seeks."*  
**John Muir**

STORY



# MISSION & VISION

---

## OUR MISSION:-

To advance the agricultural industry by providing innovative, sustainable solutions and high-quality products. We are dedicated to empowering our clients with the knowledge and resources necessary to enhance productivity, promote environmental stewardship, and support the success of farmers.

## OUR VISION:-

To become the foremost provider of sustainable agricultural solutions, fostering innovation and excellence in farming practice. We aspire to create a future where our global partnerships drive growth, ensure food security, and nurture the well-being of farming communities and the environment.



# OUR CORE VALUES

---

Our core values define who we are and guide everything we do.



## INNOVATION

We pioneer cutting-edge solutions, driving agricultural advancements.



## COMMITMENT

Our dedication to excellence empowers farmers & enhances practices.



## TEAMWORK

Collaboration fuels our success, fostering a dynamic work environment.



## INTEGRITY

We uphold honesty & transparency, building trust with stakeholders.



## RESPONSIBILITY

We commit to sustainable practices, protecting the environment for future generations.

# OUR TEAM

---

## MESSAGE FROM THE CEO:

Agriculture is the soul of Syria's economy, significantly contributing to food security, employment, and economic growth. Despite numerous challenges, this sector continues to sustain a considerable segment of the population, accounting for approximately 25% of Syria's GDP.

At Blue Agricultural Company, we are committed to revitalizing this critical sector by enhancing crop yields, providing access to high quality inputs, and leveraging modern technologies. We believe these efforts are essential to ensuring both food and economic security for our nation.

### **Kinan Issa / Chief Executive Officer**

With over 16 years of combined experience in the financial and agricultural sectors, Kinan leads the company with a strategic vision and deep industry expertise, driving sustainable growth and market leadership.

### **Alice Ismail / Chief Financial Officer**

Alice ensures robust financial health and strategic investments, leveraging her expertise in financial planning and analysis to drive profitability for the company's import and distribution operations.

### **Hanna Sawaf / Chief Operating Officer**

Hanna oversees daily operations with a focus on efficiency and excellence, bringing a wealth of operational management skills to the team.

### **Bahaa Mouhanna / Chief Marketing & Sales Officer**

Bahaa drives the company's market presence and sales strategies, utilizing his deep knowledge of agricultural markets and customer relations.

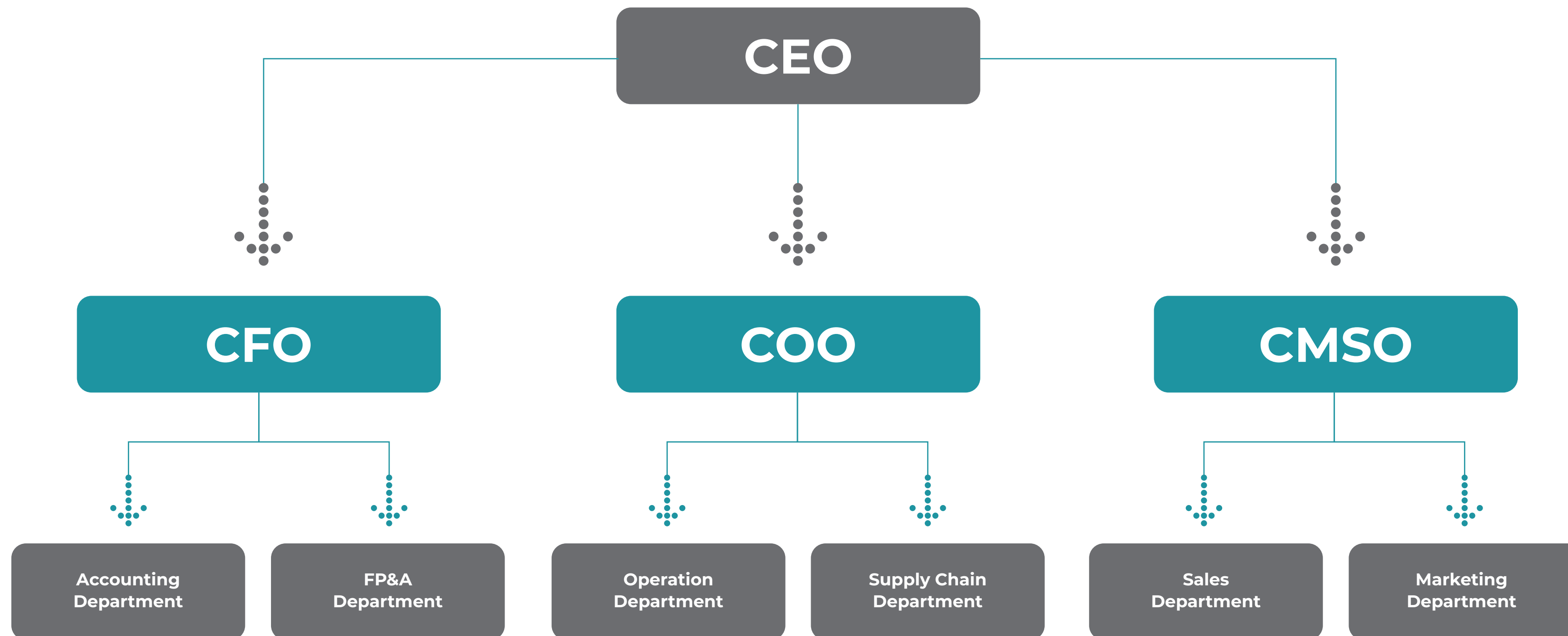
# HANDS-ON SPECIALISTS

---

Our technical and sales team is made up of six seasoned agricultural engineers with over a decade of hands-on experience. Their expertise spans a range of areas, including seed trial management, plant nutrition, and plant health. The team is well-versed in various aspects of agricultural science to support our operations effectively.



# ORGANIZATIONAL CHART





# OUR PARTNERS & ASSORTMENTS

At Blue Agricultural Company, we value the relationships we have built with our partners. Their support and collaboration enable us to provide reliable and high-quality products to our clients.





# OUR MAIN SERVICES

---

## **Global Sourcing**

Sourcing agricultural products from reputable international suppliers.

## **Delivery Networks**

Collaborating with retailers to establish efficient delivery networks across regions.

## **Tailored Solutions**

Supporting agricultural Businesses in offering the right products tailored to the specific needs & crops of farmers.

## **Thorough Training**

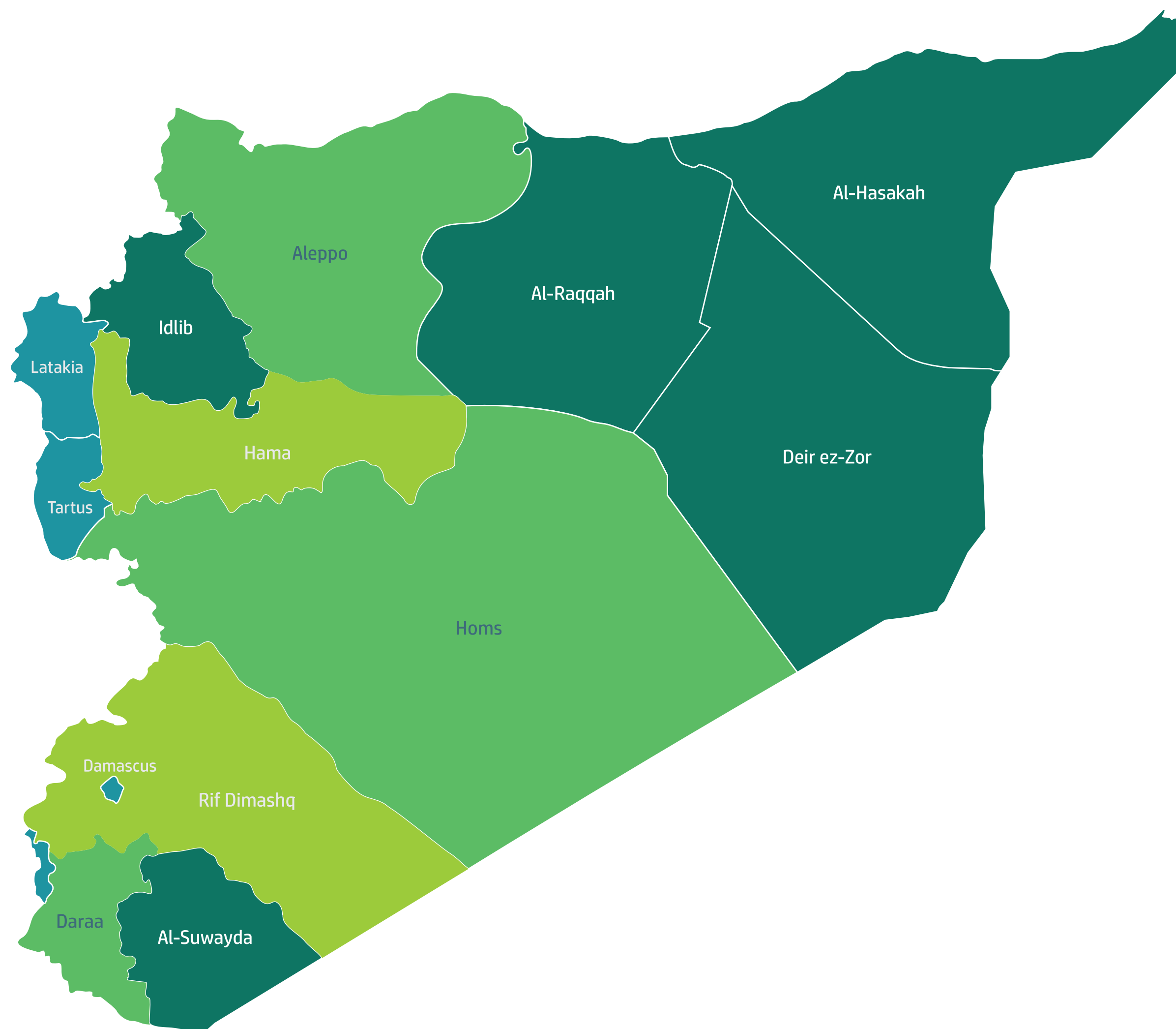
Training on product application, safety protocols & best practices for storage & handling.

# GEOGRAPHICAL COVERAGE

---

Our team consists of seasoned professionals who excel in promoting and distributing agricultural products across the **Syrian Governorates**. With extensive reach, we successfully cover over **80% of the country's regions**, ensuring that our products are available to a wide and diverse customer base.

Our expertise allows us to navigate the unique challenges of the market, delivering reliable service and exceptional results throughout Syria.



# GROWTH & FUTURE PLANS

---

**Blue** is developing an innovative application specifically designed for the **Syrian agricultural market**. This app aims to streamline agricultural processes and enhance the efficiency of our operations. With a focus on supporting farmers and connecting them with international markets, the app will leverage **advanced technology** to provide valuable tools and resources, reinforcing our commitment to driving progress in the agricultural sector.



Thank you for taking the time to learn about Blue. We look forward to the opportunity to collaborate and grow together.



**T.** +963 11 331 6500

**M.** +963 933 755 979



[info@blue-agri.com](mailto:info@blue-agri.com)



Ajlani Building, 3rd Floor  
Zuqaq Alsakhr, Altajhiz, Damascus, Syria

[www.blue-agri.com](http://www.blue-agri.com)